

Tile Roof System

Tin Roof System

PITCHED ROOF RACKING SYSTEM



Introduction

Pitched Roof Racking System designs with great flexibility both for commercial and residential roof solar system. it is suitable for installing framed and frameless modules flushed to the pitched roof. The product have the innovated design of Rail and module make the installation more easily and quickly. High pre-assembly parts and customized solution to save your install time and money.

Benefits

Easy Installation

Module can be put into Rail from any position. so the parts can be pre-assembled on factory to save your install time on site.

Flexibility and Compatible

Rail and its accessories can be installed with the most solar panels on the difference condition.

Safety and Reliability

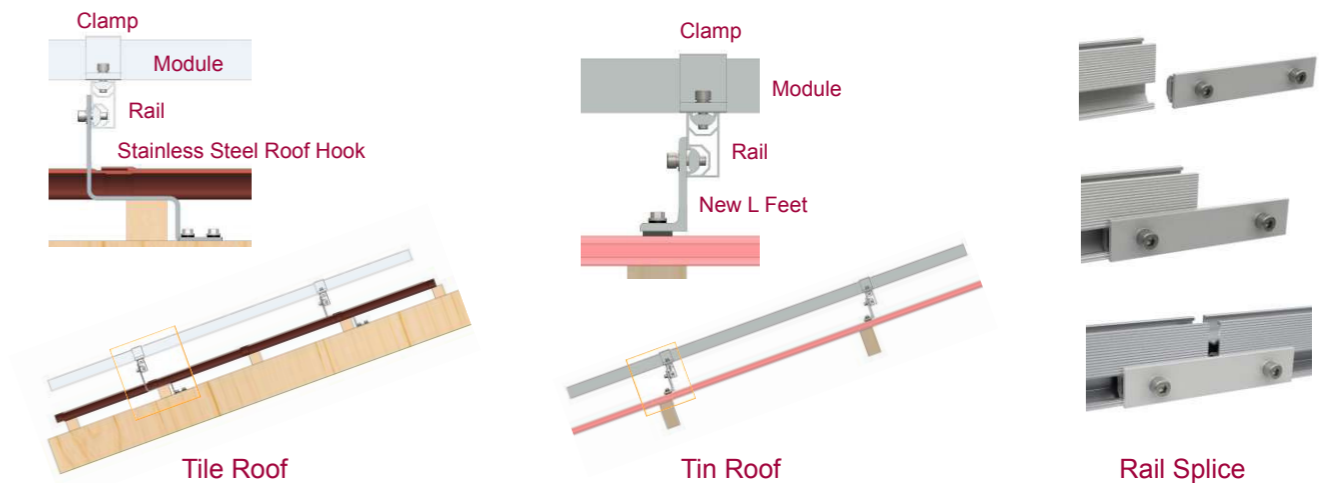
The racking systems can stand up to the extreme weather complied with the AS/NZS 1170 and other international structure load standards by skilled engineers. The main support components have also been tested to guarantee its structure and load-carrying capacity.

Technical Information

Install Site	Pitched Roof
Tilt Angle	Flushed with the roof, up to 60deg
Building Height	up to 20m
Max Wind Speed	up to 60m/s
Snow Load	up to 1.4KN/m ²
Standards	AS/NZS 1170 & DIN 1055 & Other
Material	Aluminum alloy & Stainless steel
Color	Natural
Anti-corrosive	Anodized
Warranty	Ten years warranty
Duration	More than 20 years

COMPONENTS

System Overview



Tile Roof

Tin Roof

Rail Splice

Rail

Item No.	Description
Standard	
659.08.01.RAIL25	GD Rail with a standard length of 2560 mm Designed to mount 3 modules (width 808~826mm)
659.08.01.RAIL34	GD Rail with a standard length of 3405 mm Designed to mount 4 modules (width 808~826mm)
659.08.01.RAIL42	GD Rail with a standard length of 4200 mm Designed to mount 4 modules (width 990~996mm)
659.08.01.SPLICE	Rail splice kit
659.08.01.HOOK_4	Hanger Bolt Hook 4# (Accessories M10x200 Feet & L Hanger bolt)
659.08.01.IK-05	Aluminum Tin Interface Kit 5# (Accessories Wood Screw M6.3x80)
659.08.01.PC01	Plastic Cable Clip 1# (for wires)



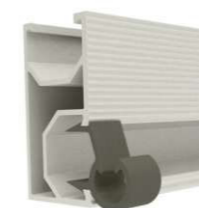
RAIL



RAIL SPLICE



Hanger Bolt Hook



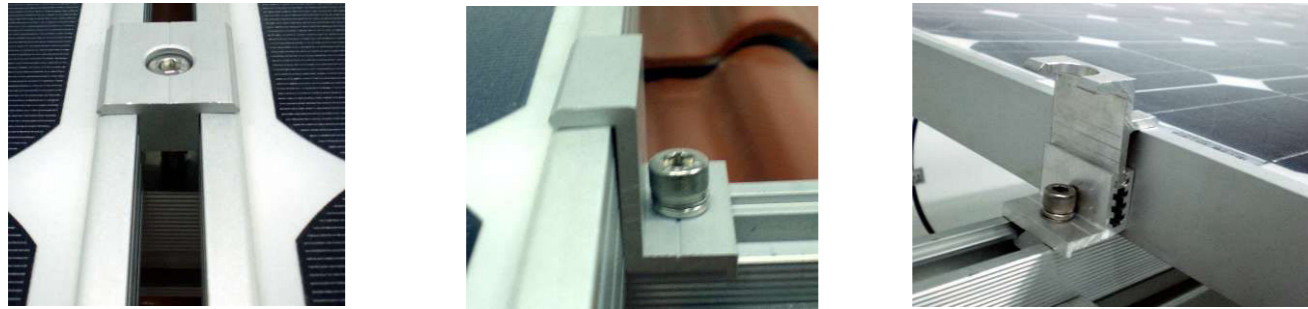
Plastic Cable Clip



Tin Interface Kit

COMPONENTS

Framed Module Clamp



Item No.	Description
Inter Clamp Kit	
659.08.01.INTER30	Inter Clamp Kit 30mm
659.08.01.INTER35	Inter Clamp Kit 35mm
659.08.01.INTER40	Inter Clamp Kit 40mm
659.08.01.INTER50	Inter Clamp Kit 50mm

End Clamp Kit	
659.08.01.END30	End Clamp Kit 30mm
659.08.01.END35	End Clamp Kit 35mm
659.08.01.END40	End Clamp Kit 40mm
659.08.01.END50	End Clamp Kit 50mm



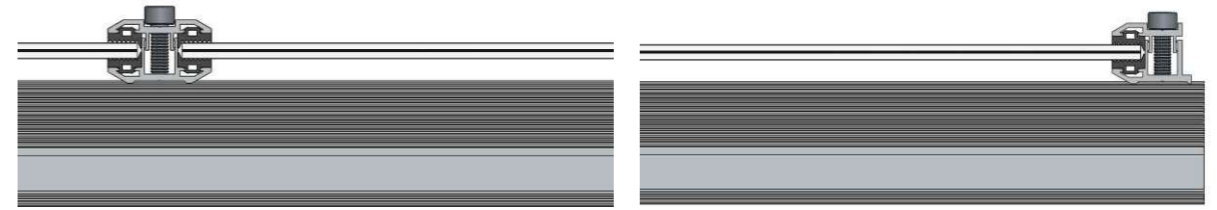
INTER CLAMP



END CLAMP

COMPONENTS

Frameless Module Clamp



Item No.	Description
659.08.01.INTER-IC	Thin Film Module Inter Clamp
659.08.01.END-EC	Thin Film Module Inter Clamp



INTER CLAMP



END CLAMP